

Carrier 50JZ 036-E-913

Specifications

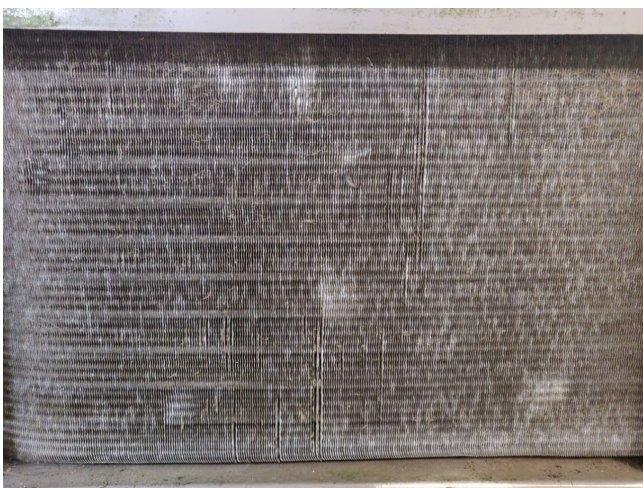
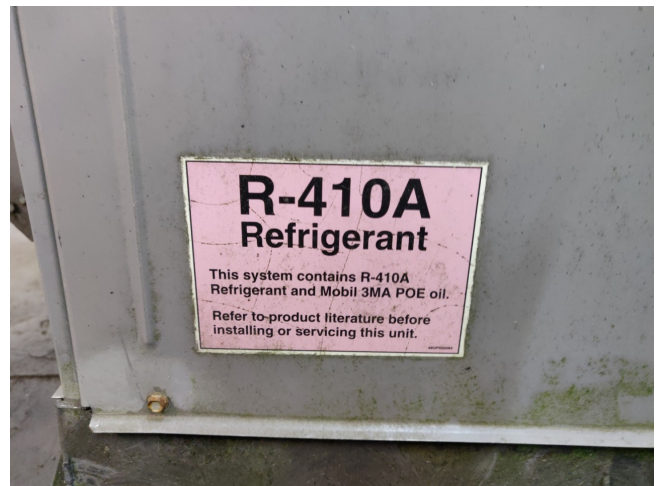
Merke	Carrier
Art	50JZ 036-E-913
Spec.	10,26 kW at 1075 Rpm uses refrigerant: R410A mainly used outside on a roof / Size: 1700x800x1500 mm (LxWxH) / Indoor Blower: 1200Cfm, Size fan: 27.9x25.4 mm , Motor Hp (Rpm): 1075
Stock	1

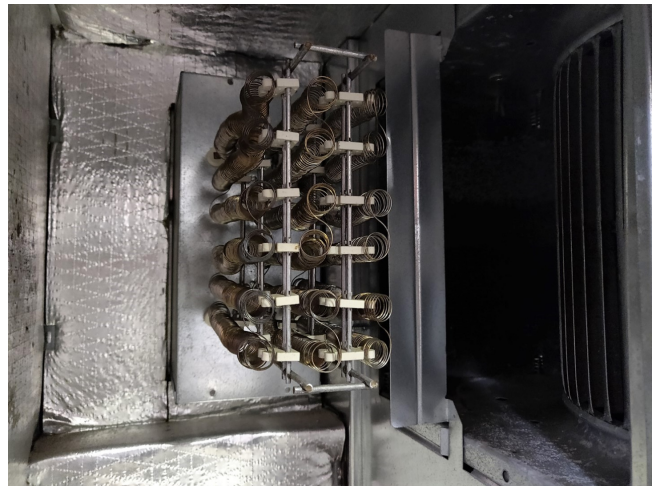


Description

Used Carrier 50JZ 036-E-913

Used Carrier 50JZ 036-E-913
Reciprocating compressor / 10,26 kW
at 1075 Rpm uses refrigerant: R410A
mainly used outside on a roof / Size:
1700x800x1500 mm (LxWxH) / Indoor
Blower: 1200Cfm, Size fan: 27.9x25.4
mm , Motor Hp (Rpm): 1075



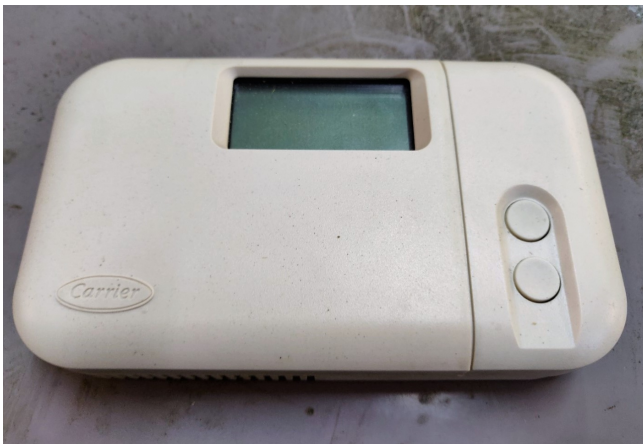


**KENPLAAT
INSTALLATIE**

INSTALLATIE IDENTIFICATIENUMMER	W0576-0050
NAAM INSTALLATEUR	W30
NAAM LEVERANCIER	Carrier
DATUM INSTALLATIE CONTROLE	12/1/05
TYPE KOELINSTALLATIE	307.036E9B
TYPE KOELMIDDEL	R113A
AANTAL APARTE KOELCIRCUITS	1
NADERE AANDUIDING PER KOELCIRCUIT	1
HOEVEELHEID VULLING (kg) PER KOELCIRCUIT	17

**KENPLAAT
COMPRESSOR**

TYPE COMPRESSOR	
MAXIMAAL TOELAATBARE WERKDRUK HO-ZIJDE	Kpa/bar
MAXIMAAL TOELAATBARE WERKDRUK LO-ZIJDE	Kpa/bar



Carrier Corporation
 MODEL 50J2-036-E-913--
 SERIAL 4606640921

* VOLTS	1 400	3 50	FLA	6.5	46	4.5	kg	6 4137	kPa
								2 1627	kPa
PAK, EXTERNAL STATIC PRESSURE Pk									
	1 400	1 50	0.8						
	1 400	1 50	2						

400 3 50 Hz
420 360

25 - 305 -

FLA	FLA	FLA	FLA	FLA	FLA
400	3 50	10 20	15	11	54
400	3 50	9.4	22.7	20	61
400	3 50	12.6	26.6	19.1	64
400	3 50	16.8	34.4	25	70